

Helpful information when applying to build a deck.

Height of deck is measured from natural grade.

Post Holes:

Keep post holes 2 ft away from the house due to possible overdig.

Post hole diameter is to be 12" (if future enclosure they must be 24").

Post hole depth is to be a minimum of 32".

Post hole depth is measured from natural grade.

Cantilever:

Maximum cantilever (overhang) for a deck is 24".

No additional weight can bear on any cantilever.

(i.e. you can not attach the deck to a fireplace chase or a bay window.)

Risers:

Maximum riser height is 8 1/4"

3 or more risers require handrails – regardless of deck height

Handrail grip size to be a maximum of 2 5/8"

Minimum width of stairway is 36"

Minimum tread width is 9 1/2"

If the risers are enclosed, a 1/2" nosing is required on tread

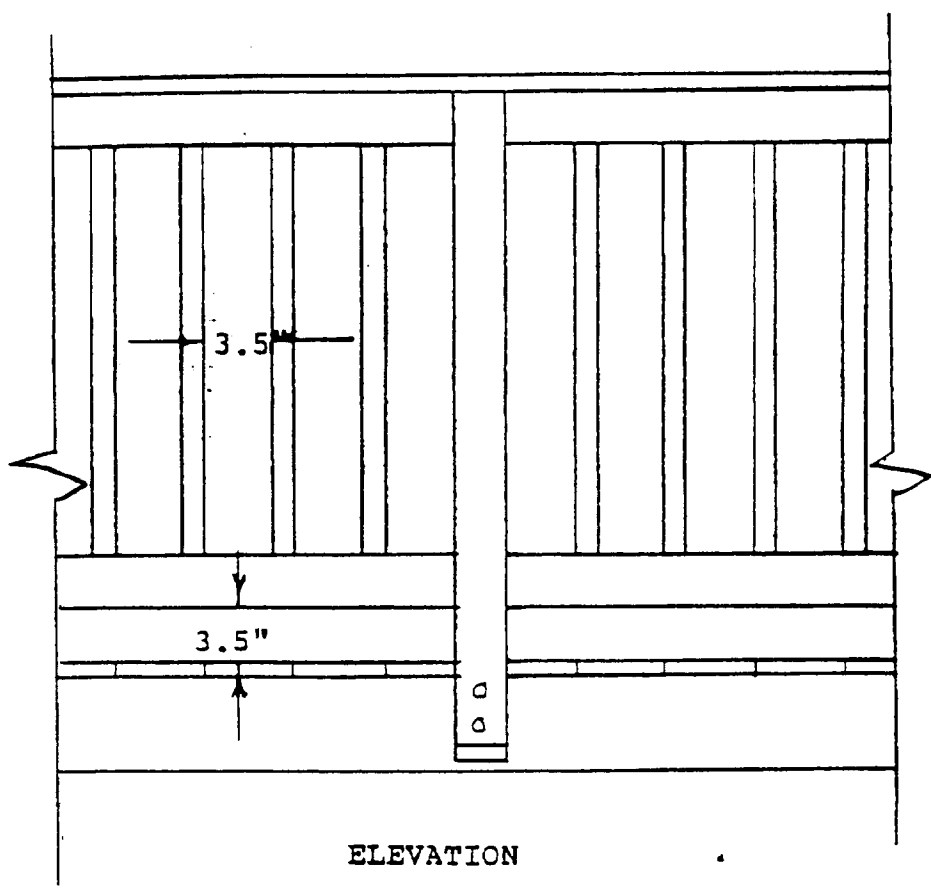
Guardrails:

A deck which is 30" high or more requires guardrails.

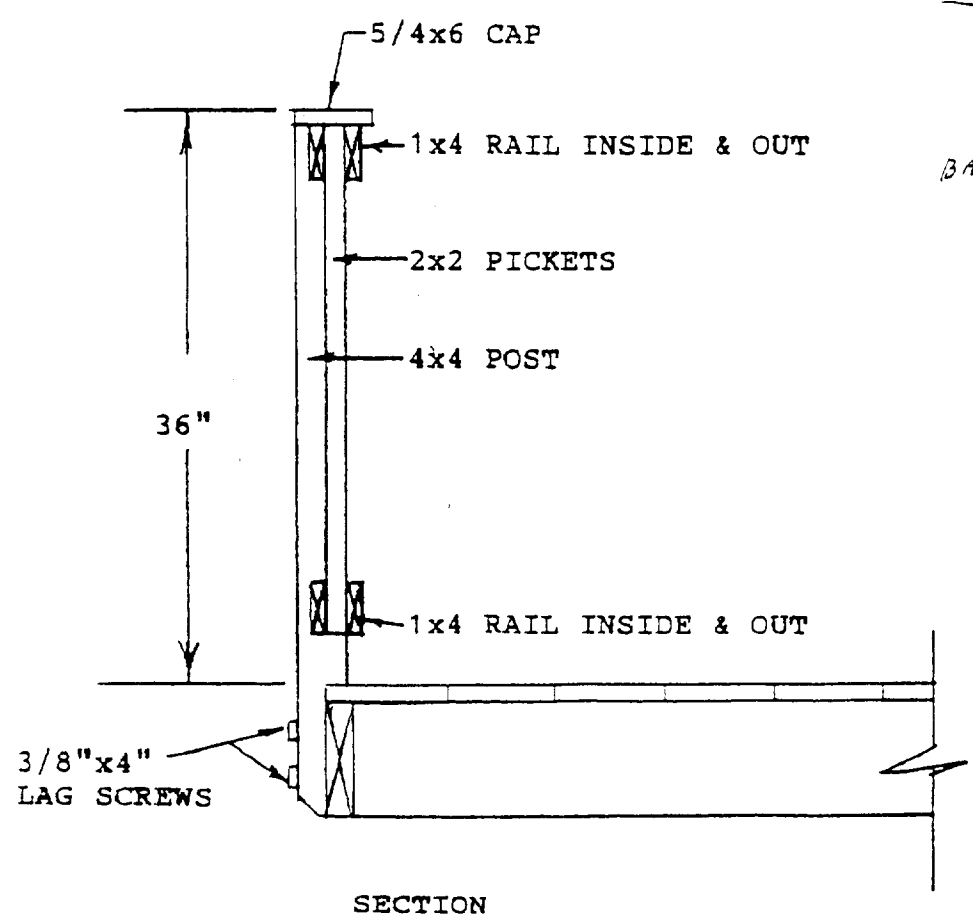
36" in height with 4" spacing between members.

Benches do not qualify as guardrail systems.

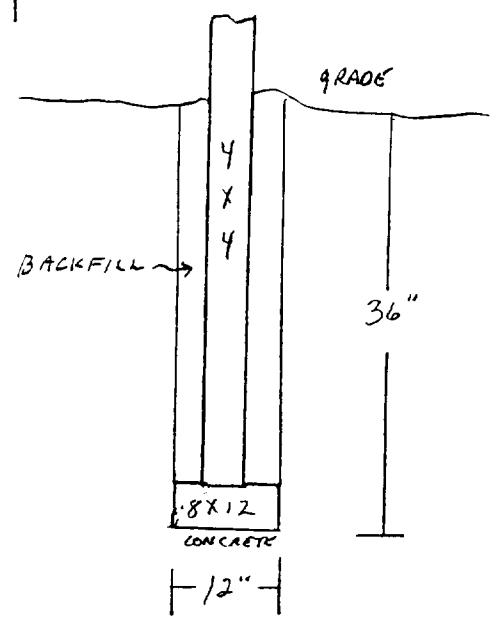
#1



ELEVATION

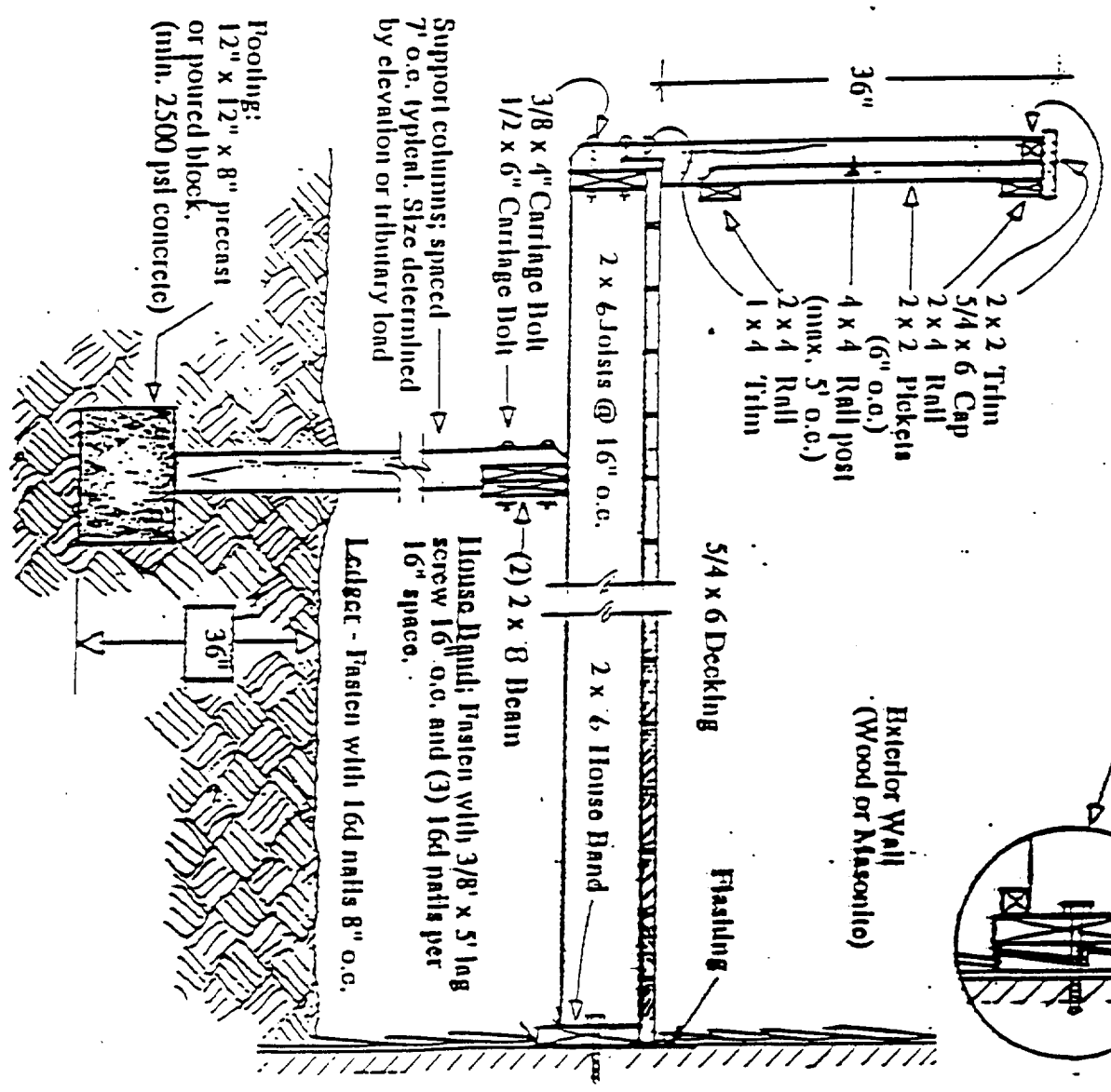
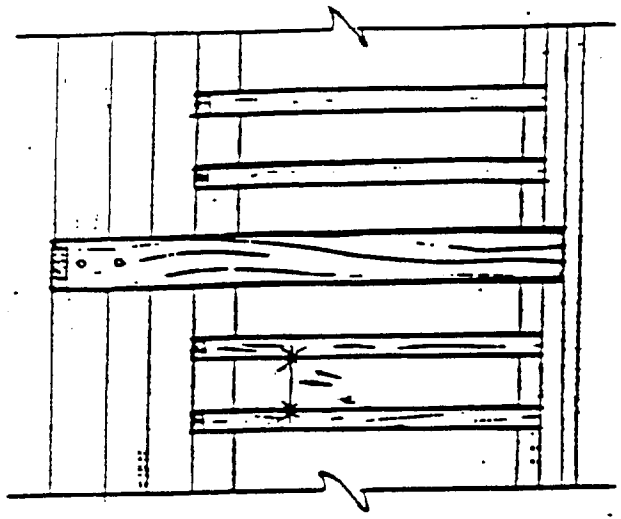


SECTION

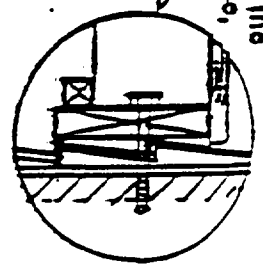


#2

Elevation



Note: With vinyl or aluminum sliding, the band may be bolted directly to the house, without flashing or removal of siding.



#3

